



**bioactive  
SCLEROSTIN ELISA**

**BIOMEDICA**

**NEW ASSAY!**

**EPITOPE-MAPPED ANTIBODIES**

**SPECIFIC FOR BIOACTIVE SCLEROSTIN**

**FULLY VALIDATED FOR CLINICAL SAMPLES**

**Setting** the **standard**  
for **clinical** research.

Supplied by:

 **Oxford  
BioSystems**

Tel: +44 (0)1235 431390  
sales@oxfordbiosystems.com  
www.oxfordbiosystems.com

# bioactive SCLEROSTIN ELISA (Cat.No. BI-20472) - NEW ASSAY!

## SCLEROSTIN: A REGULATORY MARKER OF BONE TURNOVER

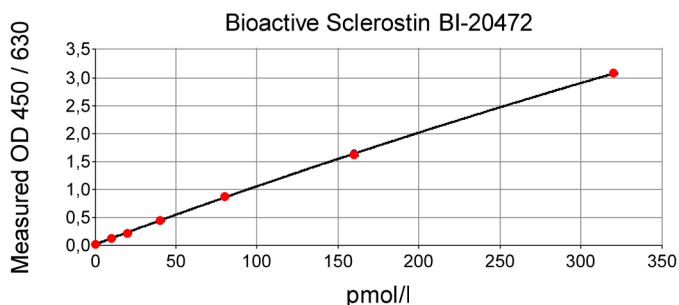
### Features and Benefits

- Fully validated for clinical samples
- Highly specific – capture antibody directed against Sclerostin's bioactive site
- 7 standards + 2 controls (all in human serum matrix!)
- 20 µl sample volume only!
- Day-test
- Convenient ready-to-use protocol

### Assay Characteristics

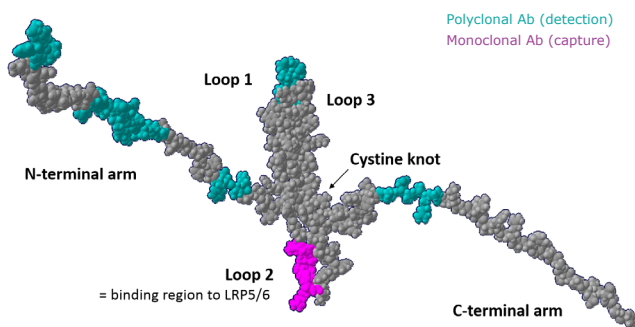
- Method: Sandwich ELISA, HRP/TMB
- Sample type: Serum, plasma (citrate, EDTA, heparin)
- Sample size: 20 µl / test
- Standard range: 0 – 320 pmol/l
- Detection limit: 1.9 pmol/l
- Incubation: 2 h / 1 h / 30 min (room temperature)
- Unit conversion: 1 pg/ml = 0.044 pmol/l (MW: 22.5 kDa)

### Typical Standard Curve



Protocols available for  
urine and cc supernatant

### Binding Sites of Capture and Detection Antibody



Sclerostin protein structure with the marked binding site of the monoclonal capture antibody in loop 2 (mAb, pink) and the five linear epitopes of the polyclonal detection antibody (pAb, turquoise) distributed throughout the protein.

### Related Biomedica Products

- DKK-1 ELISA, Cat.No. BI-20413
- FGF23 (C-terminal) ELISA, Cat.No. BI-20702
- soluble Semaphorin 4D ELISA, Cat.No. BI-20405
- OPG ELISA, Cat.No. BI-20403
- Free soluble RANKL ELISA, Cat.No. BI-20462
- total soluble Neuropilin ELISA, Cat.No. BI-20409