

SALMONELLA

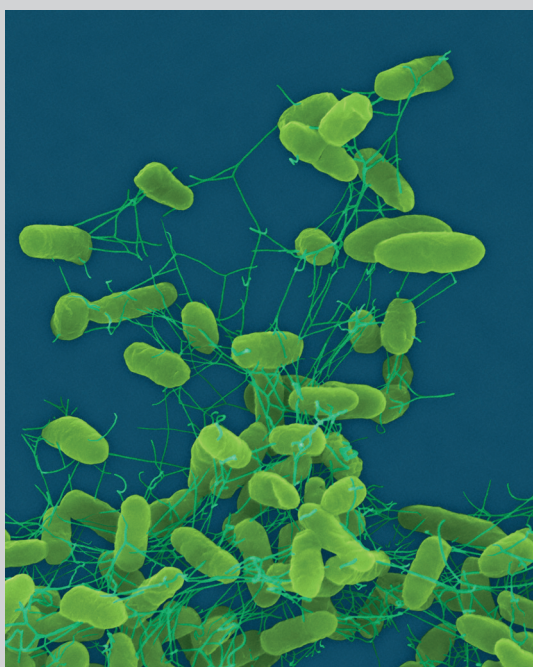
SERO-QUICK ID KIT



STATENS
SERUM
INSTITUT

prevention and control
of infectious diseases
and congenital disorders

- *Identification of S. Enteritidis*
- *Identification of S. Typhimurium*
- *8 antisera*
- *Quick results*



Salmonella Enteritidis



Salmonella Typhimurium

FOR IN VITRO DIAGNOSTIC USE

Statens Serum Institut
SSI Diagnostica
2 Herredsvejen
3400 Hillerød
Denmark

Tel: +45 4829 9178
Fax: +45 4829 9179
microbiology@ssi.dk
www.ssi.dk

Description

The Salmonella Sero-Quick ID Kit consists of eight antisera, and is the minimum of antisera needed for identification of *S. Enteritidis* (1,9,12:g,m:-) and *S. Typhimurium* (1,4,[5],12:i:1,2). The antisera are delivered in dropper bottles containing ready to use dilutions and can be renewed separately. Around 100 tests can be performed with the Sero-Quick ID Kit. The diagnostic Salmonella O and H antisera are polyclonal antisera made specific by absorption.

Background

Salmonella Enteritidis and *Salmonella* Typhimurium are the most common serotypes in the world and constitute 82% of all *Salmonella* strains isolated from humans¹. It is therefore highly important to be able to serotype these strains quickly.

Application

The eight antisera are used as indicated below. At first the O antisera are tested and thereafter the H antisera and phase inversion antisera are used. The serotyping may be expanded to identify additional serotypes, and Statens Serum Institut offers assistance in composing a panel covering the specific needs of our customers.

Reaction chart

	Reaction		Culture medium
	Enteritidis	Typhimurium	
O antisera			
O:4	÷	+	Beef extract agar
O:9	+	÷	
H antisera			
H:i	n.p.	+	Beef extract agar
H:m	+	n.p.	
H:2	n.p.	+	or
H:q,s,t,p,u	÷	n.p.	Swarm agar
Phase inversion antisera			
SG2	n.p.	+ ^a	Swarm agar
SG6	n.p.	+ ^b	

n.p. = not performed

a: SG2 is used for phase inversion of strains initially expressing H:i

b: SG6 is used for phase inversion of strains initially expressing H:1,2

Storage and shelf life

Store at 2-8°C in a dark place.
Expiry date is printed on the package.

Available product

Article No. 62984
Salmonella Sero-Quick ID Kit, 1 box

References

- ¹ Herikstad et al. 2002. Epidemiol. infect. **129**, 1-8. *Salmonella* surveillance: a global survey of public health serotyping.
² S. Gard, 1938. Zeit.f.Hyg.Inf.Krankn.

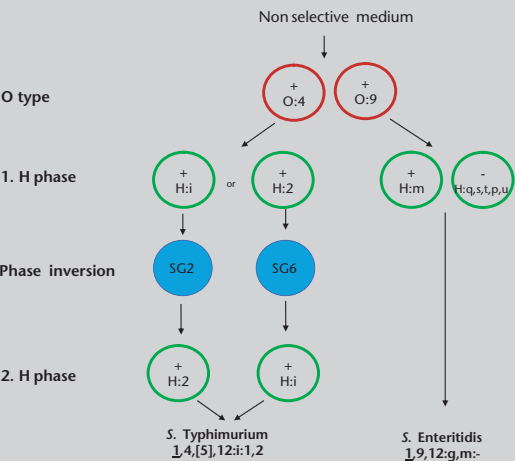
Pictures on front page

Copyright Dennis Kunkel Microscopy, Inc.

Information and ordering

Statens Serum Institut
SSI Diagnostica
2 Herredsvejen
3400 Hillerød
Denmark
Tel.: +45 4829 9178
Fax: +45 4829 9179
microbiology@ssi.dk
www.ssi.dk

Flow chart



Antisera

H:q,s,t,p,u

This antiserum is used for exclusion of other serotypes belonging to serogroup O:9 (D1) that expresses H:g or H:m,t as first H phase.

Phase inversion antisera

Many *Salmonella* serotypes are diphasic, having two flagella antigens. However a *Salmonella* bacterium expresses only one flagella antigen at a time, ex. *Salmonella* Typhimurium (1,4,5,12: i: 1,2) either expresses the first phase antigen H:i or the second phase antigen H:1,2. In case the strain in question expresses the antigen H:i the second phase antigen (H:1,2) may be forced to appear by growing the culture in a soft agar plate containing phase inversion antiserum against the H:i (phase inversion antiserum SG2)². *S. Enteritidis* is monophasic and therefore phase inversion is not needed.