



BIOTECON Diagnostics

foodproof®

## Campylobacter Kits

Detection, Identification and Quantification

### For safer food – BIOTECON Diagnostics – simply builds up trust!

The genus *Campylobacter* is a group of spiral-shaped bacteria which comprises more than 20 species. Most human illness is caused by the species *Campylobacter jejuni*, but 1-10% of human *campylobacteriosis* cases are caused by other species. In most of the cases the bacteria are transmitted by food (mainly raw poultry and raw milk products), but also by surface water contaminated with feces. With the use of **foodproof®** *Campylobacter* Detection Kit and **foodproof®** *Campylobacter* Quantification Kit, bacteria can be detected qualitatively and quantitatively, respectively.

The **foodproof®** *Campylobacter* Detection Kit and the **foodproof®** *Campylobacter* Quantification Kit are based on real-time PCR technology, which is well-established in the food industry as a highly sensitive and specific detection method.

**Fast:** 2–24 h to result with < 40 min of hands-on time

**Safe:** Prevention of false-negative results by internal control and prevention of carry-over contamination using Uracil-N-Glycosylase

**Sensitive:** Detects 1-10 cfu/25 g in food samples. Quantification down to 10<sup>3</sup> cfu/ml in rinse samples

**Easy:** Convenient, complete solution, including DNA extraction and real-time PCR analysis

**Experienced:** Manufacturer of PCR-based rapid tests for the food industry since 1998 with an ISO 17025 accredited service lab

**Licensed:** Fully licensed technology

#### Best Specificity

##### 100% Inclusivity

- 218 *Campylobacter* strains of 6 species tested

##### 100% Exclusivity

- 60 strains tested including closely related organisms and microorganisms of the same environmental habitat

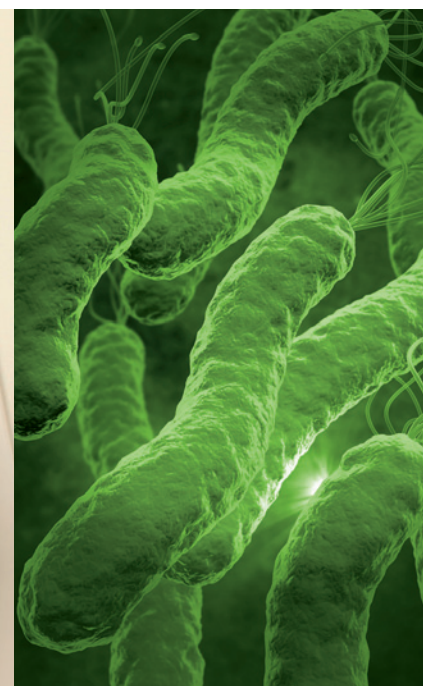
#### Matrices

All relevant food matrices tested, including poultry, fish, cheese and environmental samples

#### Identification of Species

In addition to genus detection (R 310 05):

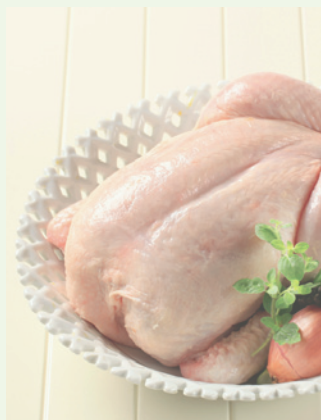
- Thermotolerant: *C. jejuni*, *C. coli*, *C. lari*, *C. upsaliensis*
- Other *Campylobacter*: *C. fetus*, *C. hyointestinalis*





# BIOTECON Diagnostics

## Workflow



**Start**  
Enrichment



**DNA Extraction**  
approx. 30 min



**PCR Setup**  
approx. 10 min



**Real-time PCR Run**  
60 - 100 min

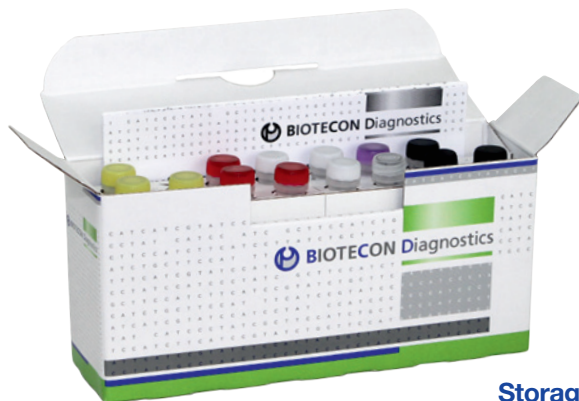
Analysis Results in 2,5 h

## Campylobacter Detection and Quantification Kits

- R 310 05 **foodproof®** *Campylobacter* Detection Kit (LC 1.x, 2.0, 480)  
R 310 05 **foodproof®** *Campylobacter* Quantification Kit (5' Nuclease)

## Specific DNA Extraction Kits

- S 400 02 **foodproof®** ShortPrep II - rapid purification  
S 400 05 **foodproof®** Sample Preparation Kit II - high quality column purification  
S 400 07 **foodproof®** Star Prep One Kit - bulk purification



**Storage** at -15 °C to -25 °C  
**96 Reactions** with a final volume of 20 or 25 µl

## DNA Extraction

**foodproof® ShortPrep II Kit**  
enables the extraction of  
*Campylobacter* DNA from food  
matrix enrichments

## Instrument Compatibility

- LightCycler 480 II
- 5'Nuclease / TaqMan® cyclers  
(e.g. CFX96, Mx3005P,  
ABI 7500)

## BIOTECON Diagnostics GmbH

Hermannswerder 17  
14473 Potsdam  
Germany

Tel.: +49 (0)331-2300-200  
Fax: +49 (0)331-2300-299

bcd@bc-diagnostics.com  
www.bc-diagnostics.com